



FEATHERWOOD 222

TOTAL HOUSE SIZE:	221.5 M2
HOUSE LENGTH:	22.78 M
HOUSE WIDTH:	12.5 M
MIN LOT WIDTH:	14.1 M

FACADE OPTIONS

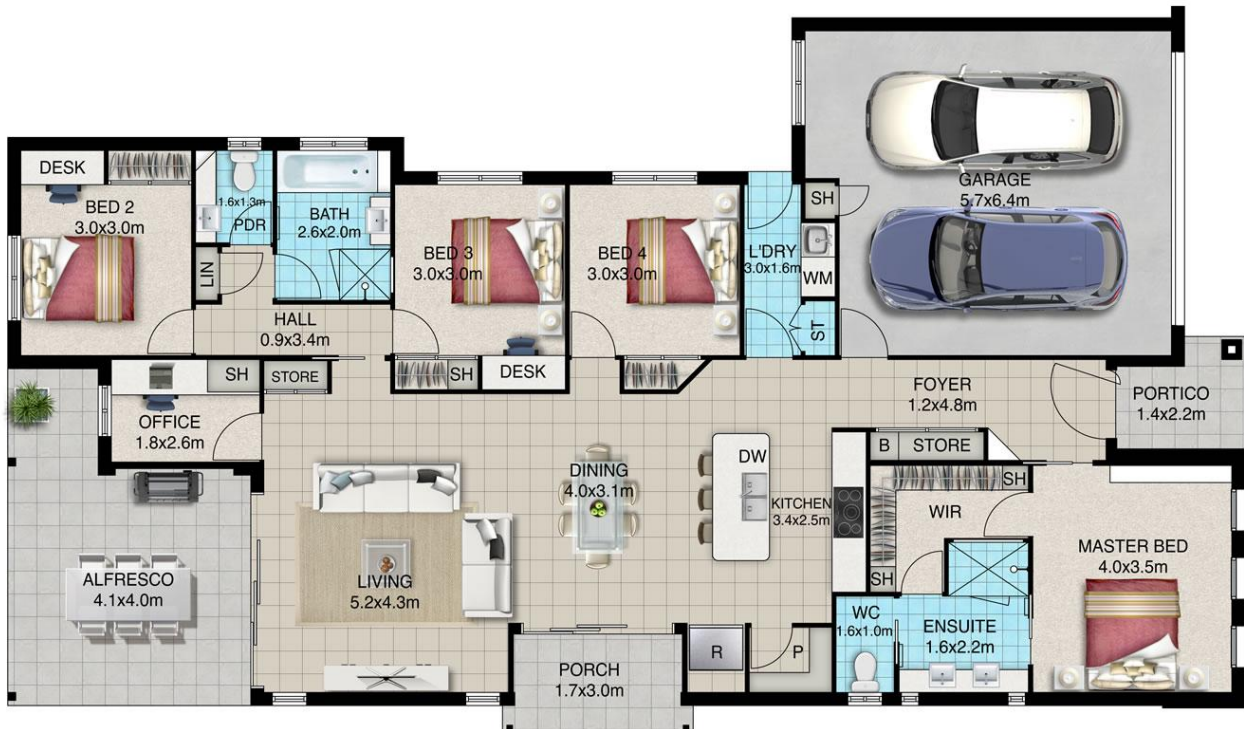


The FEATHERWOOD 222 perfectly presents the best of spacious modern design. Featuring high-raked ceilings, open plan living, four generous bedrooms plus additional office space.

Outdoor entertaining is a breeze with your choice of either large alfresco area with additional BBQ cover or relax in your sun porch with views of the garden.

With built in storage cupboards and shelving space in every room of the house, the FEATHERWOOD 222 has all your modern living requirements met.

4 BED 2 CAR 2 BATH + OFFICE



FEATHERWOOD 222

